

As one of the 200w portable solar panel manufacturers in China, GGXingEnergy always aim for good quality and honest business with every customer. You are welcomed to come to our factory to buy the latest selling, low price, and high-quality 200w portable solar panel. We look forward to cooperating with you.

200W Portable Solar Panel

This is a newest GGXingEnergy® 200w portable solar panel, advanced with ETFE coating and 4 output ports. More larger power can let you more enjoy the solar charging. Ideally suited for outdoor life, camping, travel, picnic, home emergency and off grid living power outage supplies.

**200W Portable Solar Panel Parameter**

Solar Panel Max Power	200 Watt
Solar Type	A-grade monocrystalline solar cell
Solar Cell Efficiency	22%
Optimum Operating Voltage (Vmp)	18V
Optimum Operating Current (Imp)	11A
Open-Circuit Voltage (Voc)	21.5V

Short-Circuit Current (Isc)	12.2A
Number of Solar Panels	4 folds
Output	USB Port: 5V/2.1A (max) QC3.0 Port: 5V-3A or 9V-2.5A or 12V-2A, 24W (max) TYPE-C Port: 5V-3A or 9V-3A or 12V-3A or 15V-3A or 20V-3A, PD60W (max) DC Port: 18V/11A (max, at no-load condition)
Test Condition	STC Irradiance 1000W/m ² , TC=25°C, AM=1.5
Output Interface	USB / DC / MC4 / SAE / Anderson, etc.
Extended Size	2280×540×25mm / 90*21.3*1.0 inch
Folded Size	540×600×55mm / 21.3*23.6*2.2 inch
Weight	7.5kg / 16.5lb
Color	Black / Camouflage

200W Portable Solar Panel Description

A High Quality 200W Portable Solar Panel

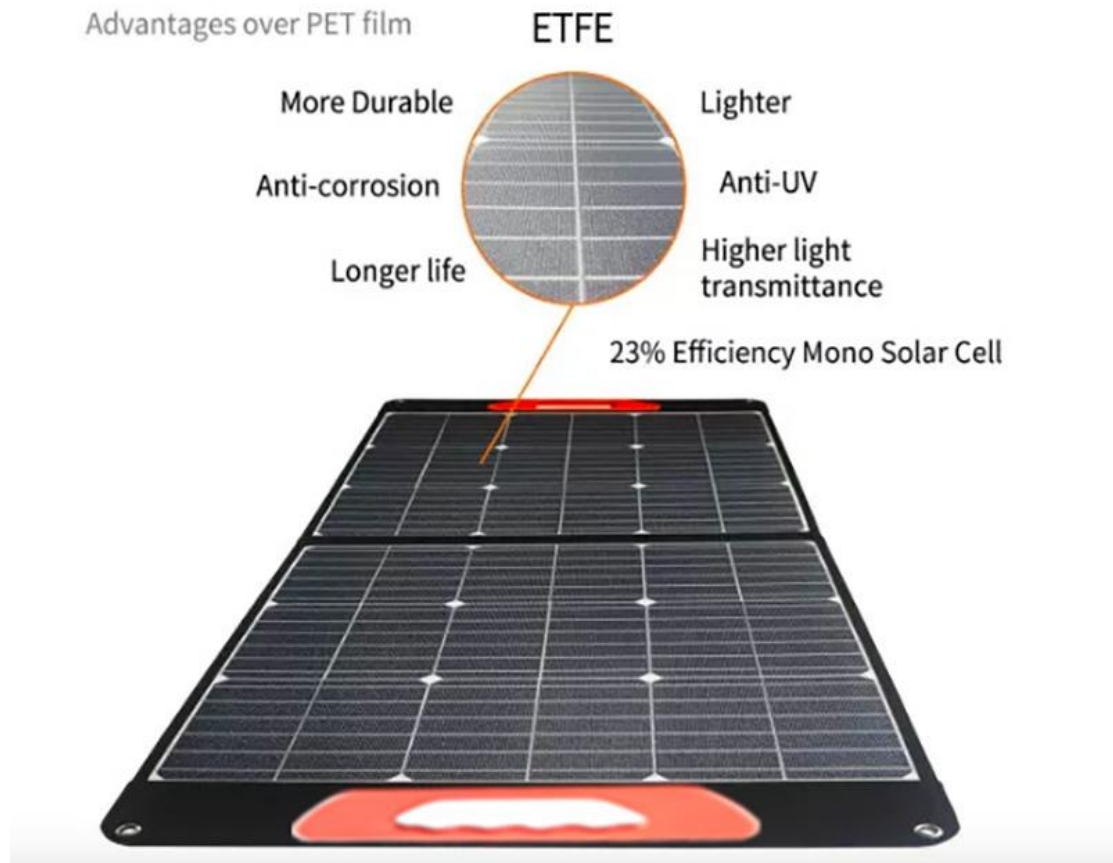
Advanced with ETFE coating, it is with more advantages than a general PET 200w portable solar panel. The unique ETFE construction is water resistant. It is more stronger for high temperature and moist condition use than general PET laminated solar panels. Featuring with honey-comb structure which enhance 10% natural lighting, high transparency (95%) to ultra-violet light, it can get better charging efficiency. Long life and recyclable, the age of ETFE laminated membrane is up to 25 years, later it could be decomposed for other use, 100% recyclable; thus a general PET solar panel may get efficiency down after two years use.

The solar cell efficiency can be up to 22%, with higher level than the average efficiency on the market. This is not only a good ensure for the quality of solar cell, such a 200w portable solar panel can realize smaller size and lighter weight to be more convenient for your outdoor use.

Using 1.2mm PCB board at back, not 1.0mm like other sellers, it can do better protection for the solar cell.

The cloth cover is made from durable oxford cloth and IP65 high water resistant to endure all weather conditions. (P.S.: The cable out leads and the junction box is not waterproof. Please make them be dry.)

Durable Solar Panel



A Portable and Foldable 200W Solar Panel

This GGXingEnergy® 200w portable solar panel is installed with two magnet equipped handles. Compared to other solar panels, such kind of handles are more fashion and also bring better portability. Just put the two solar panels together, you can finish the folding work due to the magnet attraction. Then folds back to storage like a briefcase size, it is small enough to be put in your camping bin or under the seat.

Designed with 4 metal hanging holes at each corner, this 200w portable solar panel will be convenient to be tied on a car roof or a tree, charging devices freely when you are driving, fishing, climbing, hiking, and anywhere you on the go.

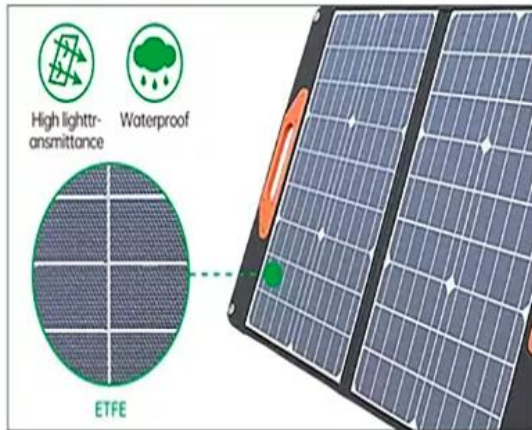
A Wide Compatible 200W Portable Solar Panel

This 200w portable solar panel is with 4 output ports.

The DC 18V port can charge for most of portable power stations on the market. Also it can charge for laptops and 12v batteries. (P.S.: Before charging the portable power station, please firstly confirm its input port, also the voltage and current.)

The black USB port is general 5V2.1A (max). The orange USB port is QC 3.0 quick charging, 5V/9V/12V, 2A 24W (max). The Type-C port is 5V-20V, 3A PD 60W (max). Greatly charging for phones, smart phones, tablets, power banks, PSP, MP4, GPS, bluetooth earphones, and other 5V USB powered devices.

Equipped with 4 adjustable kickstands at back, it can get 25%-30% more sunlight than lying flat to improve the charging efficiency. The kickstand body covered by the cloth is aluminum. It is strong enough to support the solar panel to not be blown down.



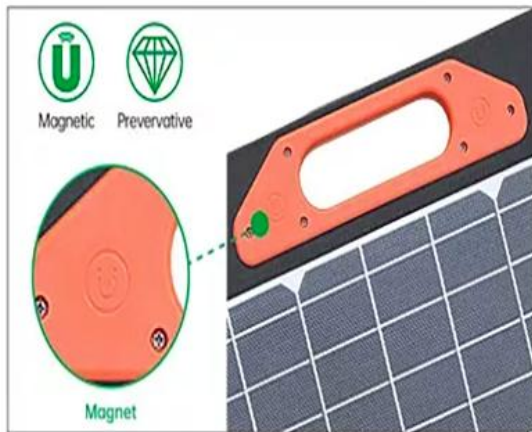
ETFE surface

Higher transmittance, higher efficiency



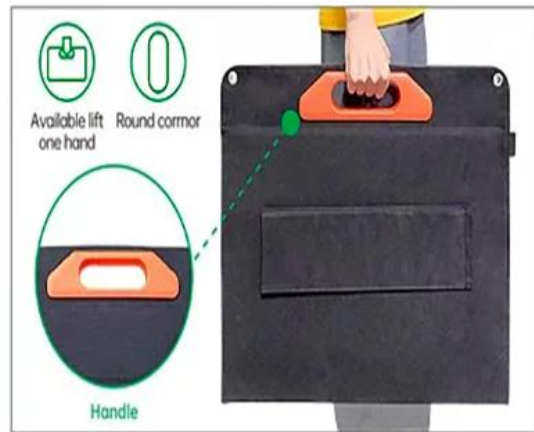
Junction box

USB-A & Type C can charge the two devices same time



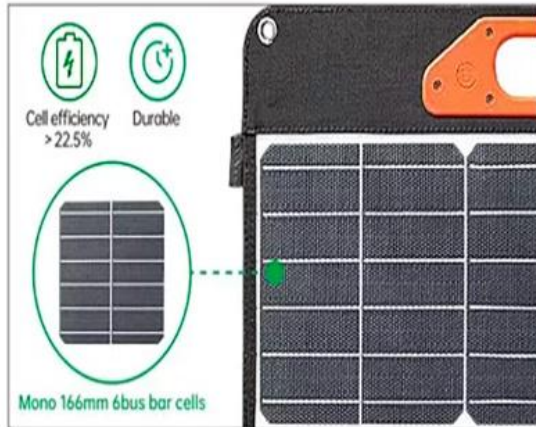
Magnetic

More portable and foldable with the inbuilt magnet



Easy to carry

More durable with the new environmentally and friendly material



Mono solar cells

Much thinner than traditional photovoltaic products and higher light conversion



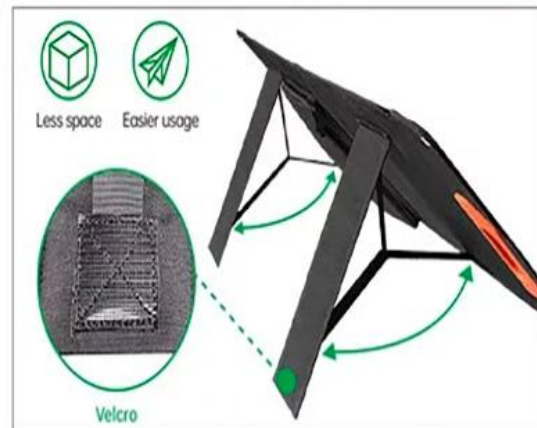
Pocket for wires

More durable with the higher quality nylon material model and double zippers design



600D Nylon

More durable with the higher quality nylon material model 600D



Adjustable supports

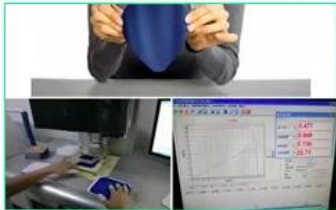
More portable with the special personalized triangle designs

Using such a 200w portable solar panel for your tent camping as well as with remote parking with your van, you will not lose power again. But this 200w portable solar panel is without battery inside and can not store power. You will need to use it under direct sunlight.

Certification



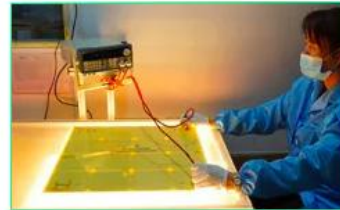
Production Process



Power output testing for solar cell



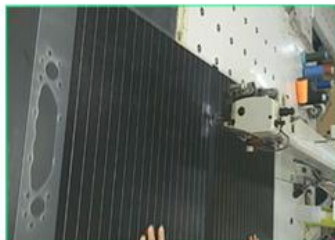
Solar panel lamination



Power output testing for solar panel



Pre-production preparation



Sewing on the solar panels



EL testing for foldable solar panel



Power output testing for finished product



Finished products waiting for clean



Finished products waiting for packing

Packing & Transport



Exhibition

